

Hel zat gewèrk

meziek: Gé Reinders
Gearrangeerd door Hardy Mertens

♩ = 140

First staff of music, measures 1-4. Bass clef, 4/4 time, key of B-flat major. Starts with a forte (*f*) dynamic. The melody consists of eighth and quarter notes.

Measures 5-9. Measure 5 is marked with a box 'A' and a measure rest of 8. Measure 6 is marked with a box 'B' and a measure rest of 9. Measure 7 is marked with a box 'C' and a measure rest of 9. Measure 8 starts with a forte (*f*) dynamic. The melody continues with eighth and quarter notes.

Measures 25-30. Continuation of the melody with eighth and quarter notes.

Measures 31-35. Measure 31 is marked with a box 'D' and a measure rest of 8. Measure 34 is marked with a box 'E' and a measure rest of 8. The melody continues with eighth and quarter notes.

Measures 43-47. Measure 43 is marked with a box 'F' and a measure rest of 9. Measure 44 is marked with a box 'G' and a measure rest of 9. Measure 46 starts with a forte (*f*) dynamic. The melody continues with eighth and quarter notes.

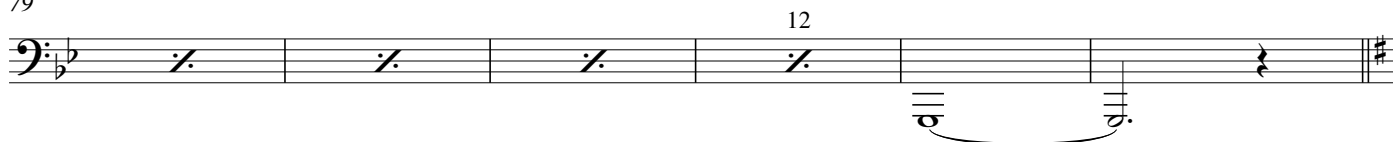
Measures 55-60. Continuation of the melody with eighth and quarter notes.

Measures 60-63. Measure 60 is marked with a box 'H'. The melody continues with eighth and quarter notes.

Measures 63-67. Continuation of the melody with eighth and quarter notes.

Measures 68-72. Measure 68 is marked with a box 'I'. Measure 69 has a measure rest of 2. Measure 70 has a measure rest of 4. Measure 71 has a measure rest of 8. The melody continues with eighth and quarter notes.

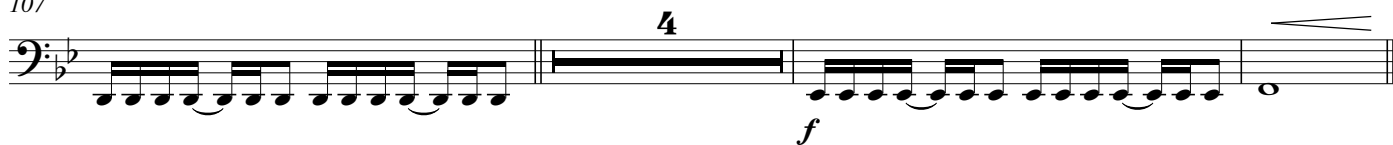
79

85 **J**

99

104 **L**

107



114

