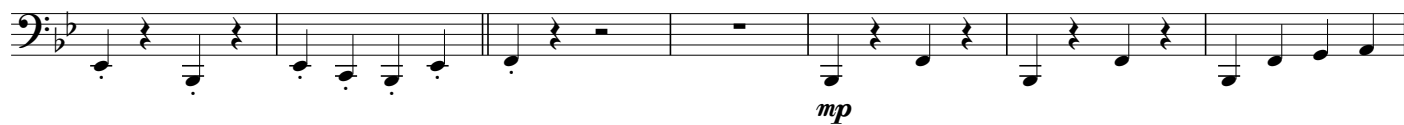


Eder Keteer

14

[illegible]



D.S. al Coda



The musical notation for the bass staff shows two measures before a repeat sign. The first measure contains a half note G2 and a quarter rest. The second measure contains a half note F2 and a quarter rest. After the repeat sign, there are five measures. The first four measures each contain a half note (G2, F2, E2, D2) and a quarter rest. The fifth measure contains a half note C2, followed by a quarter rest, and then a triplet of eighth notes B1, A1, and G1.

1.	2.
----	----

The bass line of 'The Rose Tree' is written in G major (one flat) and 2/4 time. It consists of two measures. The first measure contains a half note G2, a quarter rest, a half note G2, a quarter rest, a half note G2, a quarter rest, and a half note G2. The second measure contains a half note G2, a quarter rest, a half note G2, a quarter rest, a half note G2, a quarter rest, and a half note G2. The piece ends with a double bar line.

28

mf

[illegible][illegible][illegible]